

**Mudgee Men's Shed...**

**'Building a shed**

**from the ground up'**

# AIM

To create a unique place for a broad range of men and boys in the Mudgee district, to enable them to come together to work, share skills, life experiences and most importantly, talk....



# BACKGROUND

- The need for a men's shed in Mudgee was mentioned a few times by certain community groups, but nothing really happened.....
- But it was through another local men's health project:  
    ‘MERV’  
    *Men's Educational Rural Van*  
that finally saw action take place....





# PLANNING

A forum was held in November 2007 – over 100 local men gathered to hear about the men's shed concept and how it could be of benefit to Mudgee and the surrounding towns. Overall, the consensus from the forum was that a men's shed would be of great asset for the local community and the journey began.....

The *Mudgee Men's Shed Steering Committee* was formed, with a wide representation of men with a variety of backgrounds elected.

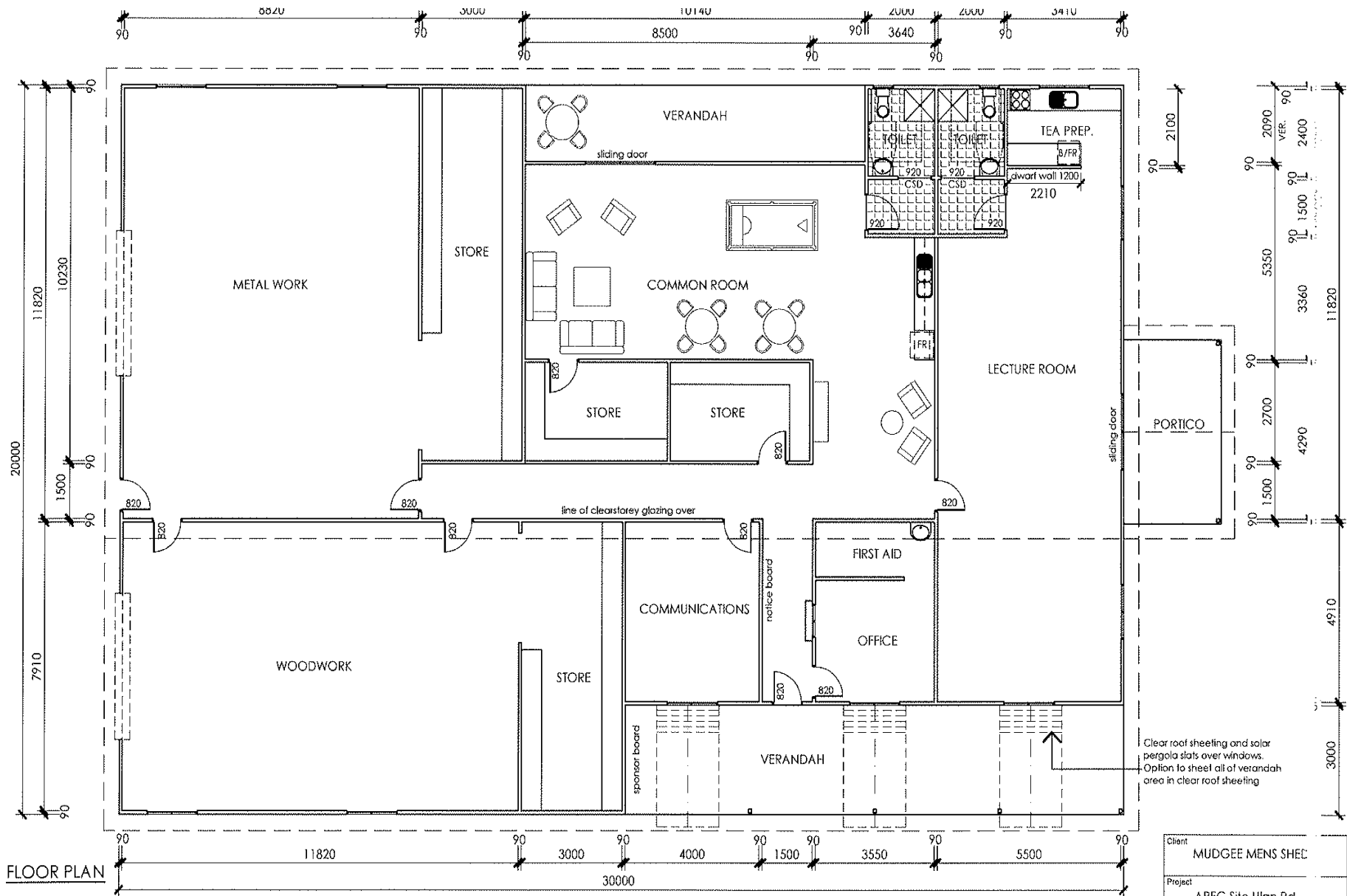
The initial purpose of this committee was to:

1. Co-ordinate the initial establishment of the Mudgee Men's Shed.
2. Discuss and explore all options in the development of the Mudgee Men's Shed.
3. Make formal decisions on behalf of the Mudgee Men's Shed in regard to location & land, shed size, layout and design furnishings and required equipment.

# PLANNING

- The committee looked at a range of issues. These being:
  - Shed design
  - Actual shed size
  - Location
  - Land options
  - Funding options
- Overall, this part of the process took approximately 18 months to finalise....
- Regular forums were held throughout the journey to keep the community informed and involved.





- Notes**
1. Builder to confirm all dimensions before commencing any works.
  2. If discrepancies occur on plans, designer is to be contacted.
  3. All dimensions are in millimeters unless otherwise stated.
  4. Use figured dimensions only. Do not scale from plans.
  5. Site information is based on information supplied by the owner and must be verified by the supplier on acceptance of this plan.

|       |                    |          |
|-------|--------------------|----------|
| D     | AS BUILT           | 16.11.10 |
| C     | ADD DIMENSIONS     | 25.03.09 |
| B     | GENERAL AMENDMENTS | 10.09.08 |
| A     | PRELIMINARY        | 13.08.08 |
| Issue | Revision           | Date     |

6 Robert Jones St, Mudgee NSW 2850  
 p: 02 6372 3103 m: 0418 605 898  
 f: 02 6372 3803 e: sunrai@hwy.com.au

This drawing is subject to copyright and must not be reproduced or used without the consent of Sunrai Designs.



|             |                                   |
|-------------|-----------------------------------|
| Client      | MUDGEE MENS SHED                  |
| Project     | AREC Site Ulan Rd Mudgee NSW 2850 |
| Title       | FLOOR PLAN                        |
| Scale       | 1:100                             |
| Date        | August 08                         |
| Drawing No. | 202MMS-02                         |
| Issue       | D                                 |

# IMPLEMENTATION

- The sheds true construction started on Friday 5<sup>th</sup> June 2009, when the slab was poured.
- Over the next 15 months, the shed was constructed, with Greg Toole (local builder and committee member) as the project manager.
- 30+ local tradespersons have volunteered time and services for the project.



# IMPLEMENTATION

- 50+ local business and community groups have been involved with the construction side of the shed.
- A range of fundraising events conducted to assist with construction.
- A number of grants were obtained during the implementation stage.



# OUTCOMES

- The shed was officially opened and handed over on Thursday 16<sup>th</sup> September 2010 by Merv Hughes (Andrology Ambassador)
- Currently there is just over 60 members and steadily climbing
- One of the largest purpose built men's shed in Australia



IT'S OFFICIAL: Merv Hughes declares the Mudgee Men's Shed open after drilling the final screw into the meeting room wall.



# OUTCOMES

- Has the ability to expand and grow into the future needs of Mudgee
- Community has taken ownership – steering committee merged into management committee
- Opening days and times have grown from 1 day a week to 4 days per week (and growing...)



# SHED FEATURES

- 615 sqm of floor space - full disabled access
- Separate working rooms
- Underfloor heating / Solar passive
- Education room – hired out for meetings, training etc
- Computer room – regular classes
- Gofer charging area
- Great location





# LESSONS LEARNED

- The best committee is committee of 3 with 2 apologies!!!!
- Get the right mix in a committee
- Take your time – try to get it reasonably accurate the first time...
- Set goals -both short and long term
- Develop timelines – start to end, with realistic timeframes
- Celebrate achievements - big & small
- Get the community involved.
- Seek support and assistance when you can – don't reinvent the wheel...

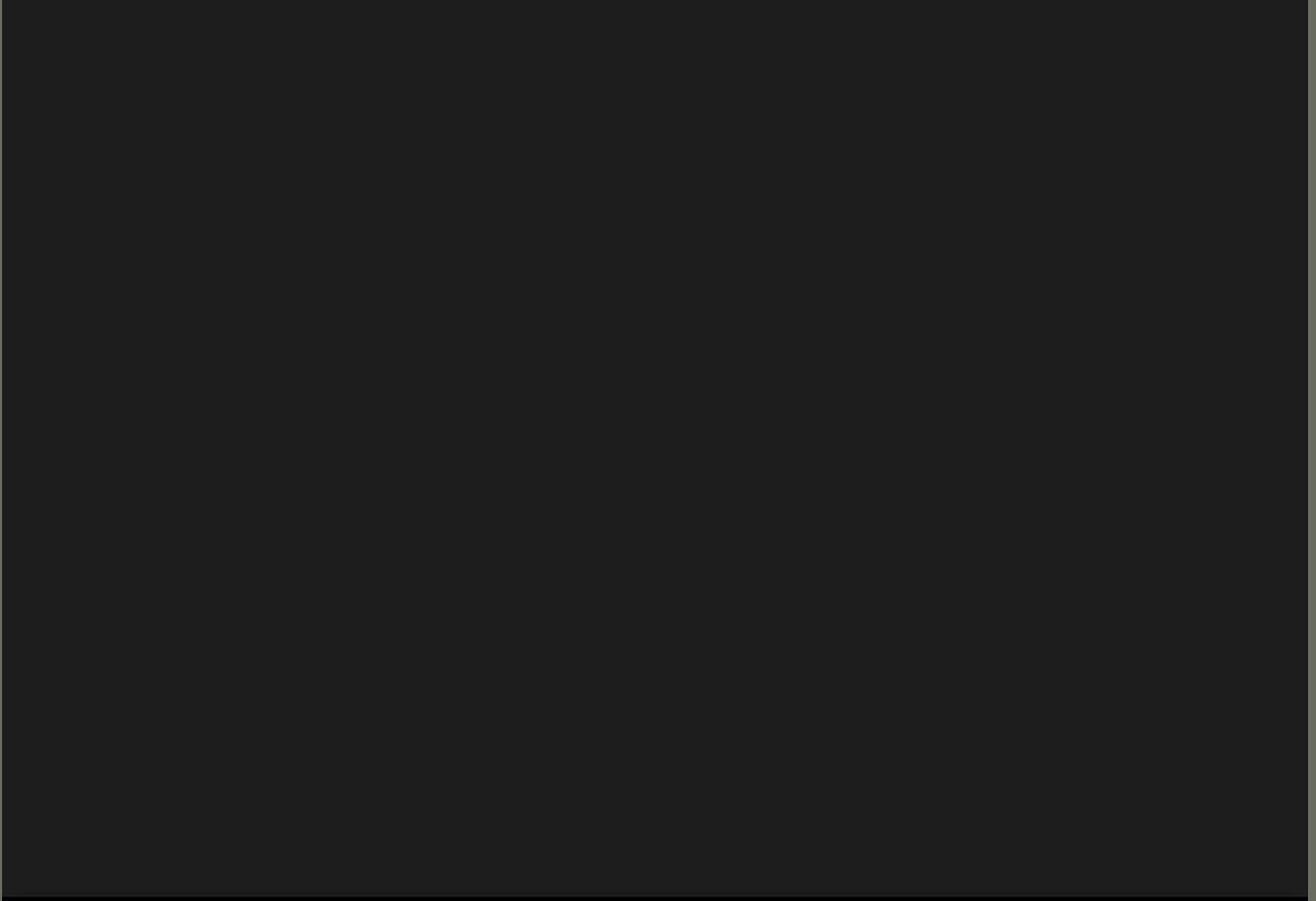


# THE FUTURE

- Sustainability
- Accessibility
- Member focused
- Projects – small and large
- Financial support – both short and long term
- Community involvement, school classes and mentoring programs
- Set Fundraising Events
  - Wine Festival Golf Day & Melbourne Cup Calcutta



## 'Mudgee Men's Shed - 'The Journey'



# THANK YOU



Andrew Whale – Media & Publicity Officer 2011/12

Ph: 0488 494 516

Email: [info@mudgeemensshed.org.au](mailto:info@mudgeemensshed.org.au)

Website: [www.mudgeemensshed.org.au](http://www.mudgeemensshed.org.au)